



# **Implementing a Satellite Sewer Discharge Control Program**

---

**Robert Hollis  
Deputy Director of Operations  
Summit County Environmental Services**

**March 11, 2010**



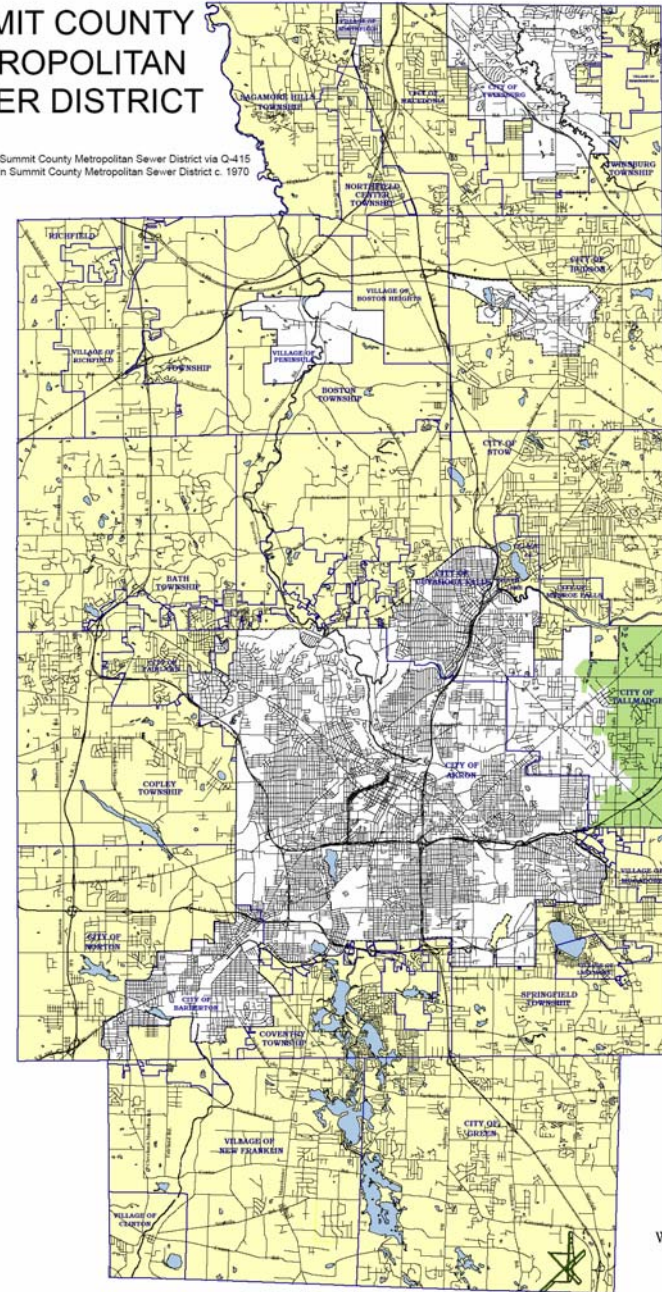
# Agenda

---

- **History of Summit County Environmental Services**
- **Background of the program**
- **9 basic elements**

## SUMMIT COUNTY METROPOLITAN SEWER DISTRICT

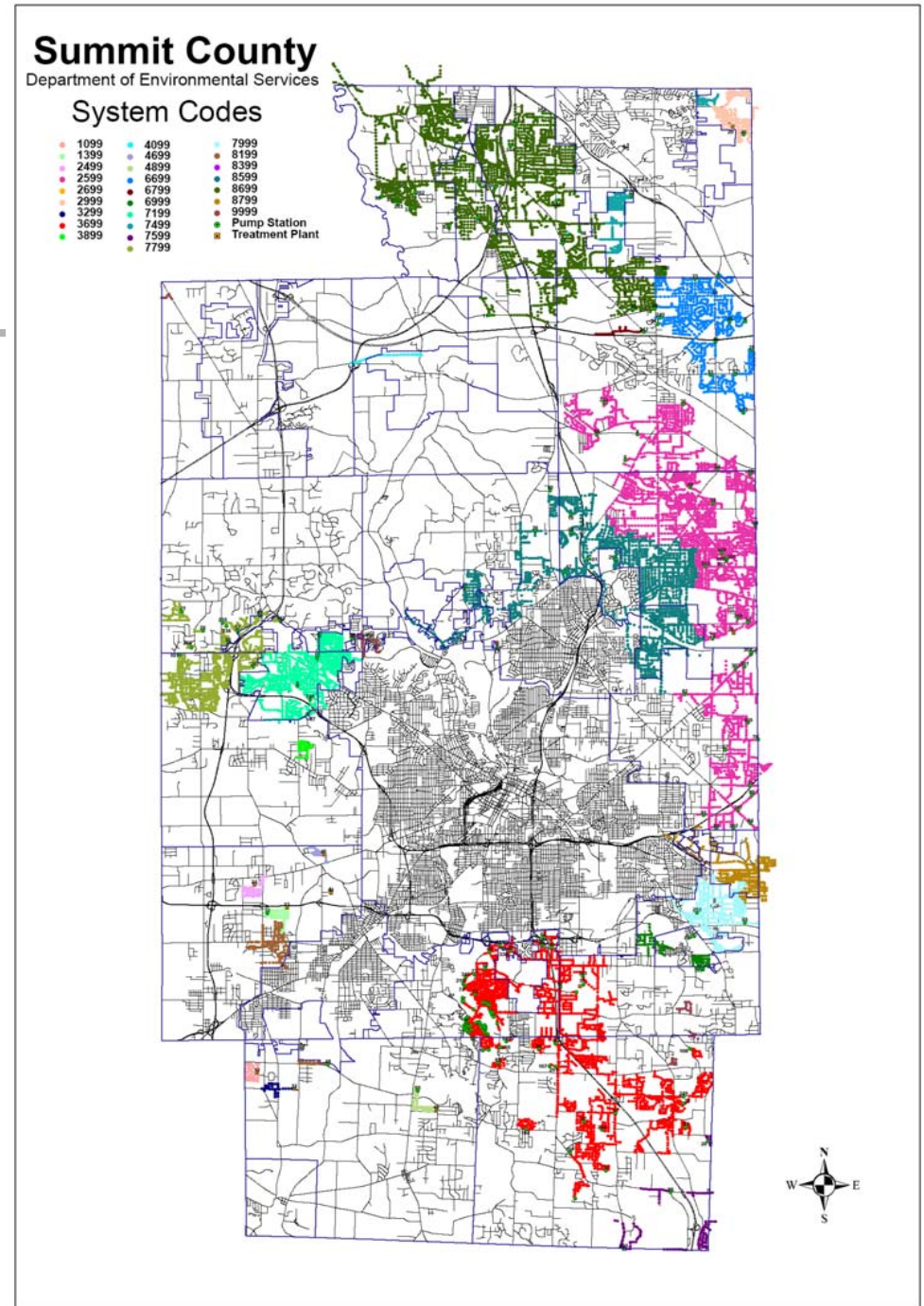
Area Added to Summit County Metropolitan Sewer District via O-415  
Area Included in Summit County Metropolitan Sewer District c. 1970



- Created in 1970
- 26 communities
- >50% of land
- < 50% of population



- 950 miles of sewer
- 25 collection systems
- 27 interconnections
- >50% of flow treated by others





# Summit County

---

- **Permits issued to:**
  - **1 Village, 3 Cities & 2 Counties**
- **Tributary to:**
  - **NEORSD & 3 Cities**



# Purpose

---

- **Ensure proper O & M of all tributary collection systems**
- **Control all CSO's**
- **Eliminate all SSO's**
- **Ohio EPA CSO control policy**



# Authority

---

- **USEPA Combined Sewer Overflow Control Policy – April 1994**
- **CSO – point source subject to NPDES**
- ***“National Framework for control through NPDES Permits”***



# Authority

---

- **Nine minimum controls**
  - **Proper O&M of collection system**
  - **Prohibition of dry weather CSO**



# Program Requirements

---

- Legal Authority
- Reporting Procedures
- Certification
- Updated maps
- Annual Reports
- BMP's
- Compliance Schedule
- Permits
- New Connections



# Legal Authority

---

- **Addition to Local Ordinance**
  - **permits to tributary Communities**
  - **BMP's**
  - **Annual reports**
  - **Compliance schedules**
  - **Master meters**



# Summit County Ordinance

---

- **926.01 Purpose & Policy**
- **926.02 Tributary Community Program**
- **926.03 Community Discharge Permit**
- **926.04 Compliance Plan Evaluation**



# Summit County Ordinance

---

- **926.05 Program Monitoring**
- **926.06 Records Retention**
- **926.07 Miscellaneous Provisions**
- **926.08 Violations**



# Summit County Ordinance

---

- **926.09 Enforcement**
- **926.10 Director's Hearings**
- **926.11 Judicial Proceedings**
- **926.12 Interpretation of Regulations**
- **926.99 Penalty**



# Best Management Practices

---

- **Responsibility & Authority**
- **Management & Line Staff**
- **Job Descriptions**



# Best Management Practices

---

- **PM of Sewers**
  - **Surface & manhole inspection**
  - **Routine cleaning**
  - **Flow monitoring**
  - **Smoke & dye testing**
  - **CCTV inspection**



# Best Management Practices

---

- **PM of pump stations**
  - **Inspection**
  - **Cleaning**
  - **Mechanical maintenance**



# Best Management Practices

---

- **Repair work**
  - **In-house or contract**
  - **Equipment**
  - **Emergency procedures**



# Best Management Practices

---

- **Record keeping**
  - **Inspection & complaint forms**
  - **Work orders**
  - **Condition assessment**



# Reporting Procedures

---

- **Unauthorized discharges**
  - **24 hour notice to plant & OEPA**
  - **5 day follow-up report**
  - **OEPA/DSW/Permits Program  
Technical Assistance**



# Compliance Schedule

---

- **Implementation of Program**
  - 6 to 18 months
- **Tributary community**
  - 3 to 18 months



# Certification

---

- **Class 1 system**
  - **Collection License 1**
  - **Operator License 1**
- **Class 2 system**
  - **Collection License 2**
  - **Operator License 2**
- **ORC Chapter 3745-7**



# Permits

---

- **General conditions**
  - **Prohibition of new SSO's**
  - **Prior authorization for new connections**
  - **Mapping**
  - **Flow limitations**



# Permits

---

- **Compliance schedules**
  - **BMP's**
  - **Certification**
  - **Eliminate/control SSO's**



# Permits

---

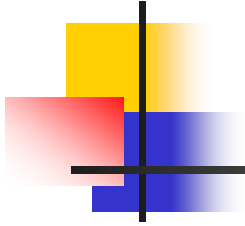
- **Attachments**
  - **Schedule of connection points**
  - **New connection permit**
  - **Annual checklist**



# Updated Maps

---

- **Sewers**
  - **Location, size, material & age**
  
- **Pump stations**
  - **Location, capacity & style**



# New Connections

---

- **Procedures**
- **Notification to receiving Plant**
- **Forms**



# Annual Reports

---

- **Tributary Communities to Plant**
  - **Compliance with BMP's**
  - **Rehab/replacement projects**
  - **Sewer extensions**
  - **Costs**
  - **overflows**



# Annual Reports

---

- **Receiving Plant to OEPA**
  - **Summary of all tributary reports**



# Questions?

---



**Robert Hollis** [rhollis@does.summitoh.net](mailto:rhollis@does.summitoh.net)