



Water **BOOM** 2016



June 27-30, 2016

The Bertram Inn & Conference Center, Aurora, Ohio

**Registration is now open at:
www.ohiowea.org**



The Bertram Inn & Conference Center

The 2016 Conference is a **BOOMING** time to obtain valuable education and network with others in the water quality field.

Hosted by the Northeast Section. For information contact:

Mary Ann Driscoll
Conference Co-Chair
330.376.5778
MaryAnn.Driscoll@burgessniple.com

Art Kimpton
Conference Co-Chair
440.838.1221
akimpton@peltonenv.com

Ted Baker
Technical Program Chair
440.461.4677
kingsnu@aol.com

Ohio Water Environment
Association
614.488.5800
info@ohiowea.org

Dear WaterBOOMers,

Join your OWEA friends and colleagues as we return to the Bertram Inn for the OWEA 2016 Annual Conference!

We would like to invite all water and wastewater professionals and coworkers to join us in Aurora for three and a half days of networking and learning. The program contains a variety of learning and networking opportunities that will appeal to people of all ages and experience. We will be continuing the tradition of recognizing the achievements of our peers at the Awards Breakfast and Banquet, while introducing new concepts and technologies through exhibits and technical sessions.

The 2016 Conference offers BOOMing value for your money and time!

There are more than 13 contact hours offered through technical sessions, exhibit hall tours, and a plant tour. The Conference Committee has compiled a diverse group of talented speakers to share their knowledge and provide a learning opportunity through more than 44 presentations. New this year – we are presenting the All Star Performers track on Thursday morning! These four presentations are

being given on both Wednesday and Thursday, so you have two chances to catch these informative sessions!

Numerous vendors will gather to provide insight on new equipment and technological advances in the industry. In addition to the learning opportunities, there are several occasions to network and expand professional relationships. Golf, the Welcome Social,

Meet and Greet and Banquet are all great occasions to network, make new friends and spend time with colleagues. Be sure to meet the Ops Challenge teams and take in the Operations Challenge Events. See if you and your group are up to the challenge next year!

We would like to thank all the sponsors and those that have worked hard for several months to make this conference a great experience for all!

Sincerely,
2016 Conference Committee Co-Chairs
Mary Ann Driscoll,
maryann.driscoll@burgessnipl.com
Art Kimpton,
akimpton@peltonenv.com

OWEA Needs Your Help

A Successful Conference is absolutely dependent on the contributions of time and effort from volunteers. From planning to executing, there are so many tasks to be completed. If interested in helping out, contact:

Amy Davis, *amydavis@phiowea.org*, 614-488-5800.

You can also sign up using the online form at *www.ohiowea.org*.

Registration: Monday - Thursday
Golf Volunteers: Monday
Exhibit Tour Monitors: Tuesday
Exhibit Hall Assistants: Tuesday

Sign Wranglers: Tuesday - Thursday
Ticket Takers: Tuesday and Wednesday
Moderators: Tuesday - Thursday
Monitors: Tuesday - Thursday

Registration Options

Early Registration - by May 31st:

Full Conference Member.....	\$275
Full Conference Nonmember.....	\$400
Retired Member Full Conference.....	\$150
Tuesday Only Member.....	\$145
Tuesday Only Nonmember.....	\$220
Wednesday Only Member.....	\$145
Wednesday Only Nonmember.....	\$220
Student.....	\$50
Spouse/Guest Program.....	\$160

Late Registration - June 1 and after:

Full Conference Member.....	\$325
Full Conference Nonmember.....	\$450
Retired Member Full Conference.....	\$200
Tuesday Only Member.....	\$170
Tuesday Only Nonmember.....	\$245
Wednesday Only Member.....	\$170
Wednesday Only Nonmember.....	\$245
Student.....	\$75
Spouse/Guest Program.....	\$210

Budget Options*

*This option for attendees who only want to attend Technical Sessions on Tues, Wed, or Thur, or walk the Exhibit Exposition on Tuesday. Except for lunch on Wed, which is included, Food/beverages/networking events are not included in this price.

Tues Tech Sessions & Exhibition.....	\$50
Wed Tech Sessions & Lunch.....	\$75
Thur Tech Sessions - 1/2 Day.....	\$50
Multiple Day Combo Available	

Exhibitor Registration:

Includes Full Conference Registration for Primary Exhibitor	
Member Exhibitor.....	\$700
Nonmember Exhibitor.....	\$875
Extra Booth Attendant (2 max).....	\$50

Golf Registration:

Foursome.....	\$360
Individual Golfer.....	\$90
Hole Sponsorship Sign.....	\$250 each

OWEA 2016 Sponsorship Levels:

Titanium.....	\$7500
Platinum.....	\$6000
Gold.....	\$4500
Silver.....	\$3000
Bronze.....	\$1500
Copper.....	\$1000
Nickel.....	\$500
Golf.....	\$250
Cobalt.....	\$250

Schedule | Monday, June 27 - Thursday, June 30

Monday, June 27

8:00 a - 9:00 p	Registration
9:00 a - 5:00 p	Ops Challenge Events
9:00 a - 4:00 p	Preconference Communication and Outreach Workshop
8:00 a - 5:00 p	Golf Outing - Boulder Creek Golf Course (shotgun start at 9:30 am)
5:00 p - 9:00 p	Exhibitor Setup
7:30 p - 10:00 p	Welcome Social - Attendees and Ops Challenge Teams

Tuesday, June 28

7:00 a - 5:00 p	Registration
7:00 a - 10:00 a	Exhibitor Setup
8:00 a - 9:30 a	Exhibitor Breakfast
10:00 a - 5:00 p	Exhibit Hall Open
8:30 a - 10:30 a	Awards Breakfast
10:30 a - 11:30 a	OWEA Annual Business Meeting
11:15 a - 4:00 p	Spouse/Guest Program
11:00 a - 12:00 p	Exhibit Hall Tour (earn one contact hour)
12:00 p - 1:00 p	Lunch in Exhibit Hall
1:00 p - 4:00 p	Ops Challenge Events
1:00 p - 3:45 p	Technical Sessions - Young Professional Papers
1:30 p - 2:30 p	Exhibit Hall Tour (earn one contact hour)
2:15 p - 3:45 p	Portage County Water Resources Tour Streetsboro WWTP
4:00 p - 5:00 p	Exhibitor Reception - Including Ops Challenge Awards
5:00 p - 6:00 p	Exhibit Tear Down
6:00 p - 10:00 p	Meet & Greet - ThornCreek Winery
10:30 p	After Party in Hospitality Suites - Pool Area (All attendees welcome)

Wednesday, June 29

7:00 a - 5:00 p	Registration
7:00 a - 8:00 p	Crystal Crucible Breakfast (by invitation)
7:00 a - 9:00 p	Breakfast
8:00 a - 11:45 a	Technical Sessions (4 Concurrent Sessions)
9:15 a - 4:00 p	Spouse/Guest Program
11:45 a - 1:00 p	Lunch
11:45 a - 1:00 p	President's Luncheon (by invitation)
1:00 p - 4:45 p	Technical Sessions (4 Concurrent Sessions)
6:00 p - 7:00 p	Reception - 5S Induction
7:00 p - 9:30 p	Annual Banquet & Awards
9:30 p - 11:00 p	After Banquet - Drinks, Desserts, and Music
11:00 p	After Party in Hospitality Suites - Pool Area (All attendees welcome)

Thursday, June 30

7:00 a - 11:00 a	Registration
7:00 a - 9:00 a	Breakfast
7:00 a - 8:00 a	5S Breakfast (by invitation)
8:00 a - 11:45 p	Technical Sessions (3 Concurrent Sessions)
12:00 p - 1:30 p	Conference Committee Lunch (by invitation)

*Schedule as of 2/23/2016

NESOWEA PRECONFERENCE WORKSHOP MONDAY, JUNE 27TH

What Do We Know and How Do We Share It?

This is a one-day workshop hosted by the OWEA Northeast Section open to anyone – conference registrants and one-day visitors. The Northeast Section is hosting this event and covering some of the costs to provide a service to the membership and offer training on a very important topic.

Communication and outreach is an often forgotten key element of our industry. The Northeast Section is excited to bring this important topic to the annual conference. This workshop is designed to provide attendees with some direction or advice on how best to communicate the importance of what we do to the public. The next Buckeye Bulletin will provide a list of speakers and topics.

Special Offer: Invite your manager to come with you for FREE! If an operator or superintendent registers for this workshop, they may register one manager or governmental official (from the same municipality) for free. The free attendee must also pre-register.

The cost of the workshop is \$25 and includes a continental breakfast and lunch and attendees will obtain contact hours. This event requires separate registration from the conference. Non-members can attend for the same rate.

Welcome Social | Monday, June 27

Whether a busy day with colleagues on the golf course, at Operations Challenge or at the Preconference Workshop, or just getting to the conference Monday evening, join us Monday evening poolside at the hotel for a Welcome Social! Meet new people while enjoying beverages and appetizers from 7:30 pm – 10:00 pm.



Exhibition | Tuesday, June 28

Exhibitor spaces are limited so reserve your booth now!

The Exhibition will be held at The Bertram Hotel & Conference Center in Aurora, Ohio. The Exhibit Hall will be open Tuesday from 10:00 am - 5:00 pm, with an Exhibit Hall Tour for one contact hour each from 11:00 am - 12:00 pm and 1:30 pm - 2:30 pm. The exhibition will conclude with a reception from 4:00 pm - 5:00 pm in the exhibit hall.

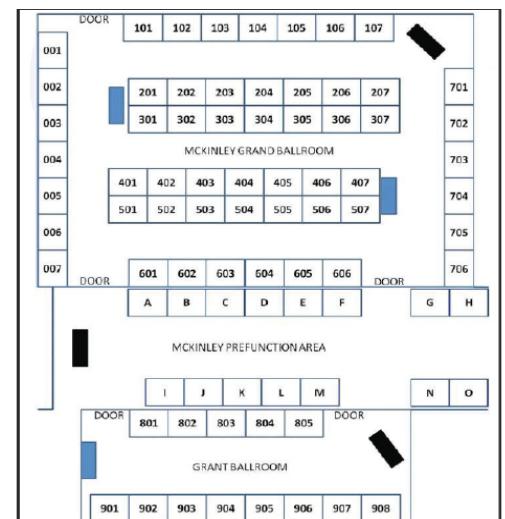
Register online at www.ohiowe.org. or contact OWEA at 614.488.5800/info@ohiowe.org.

Registration includes one full conference registration for primary exhibitor:

\$700 for OWEA members

\$875 for Nonmembers

Additional Booth Attendants: \$50 includes Exhibition access and Tuesday breakfast



Awards Breakfast | Tuesday, June 28, 8:30 am to 10:30 am

Kickoff the conference by getting together with your peers to honor the best in our industry. The Awards Breakfast will be held on Tuesday, June 28 at 8:30 a.m. in the Hayes Ballroom. This ballroom is in the adjacent building to the sleeping rooms. After a hot breakfast the OWEA awards will be presented to those individuals that have shown exemplary service and dedication to our industry. Be there not only to congratulate those award winners but also the Crystal Crucible and Golden Manhole winners. The 5S inductees will be announced with their induction to take place at the cocktail hour before the banquet. Paul Bowen, WEF President, will also be there to address us and let us know what is going on at the Water Environment Federation.



OWEA Annual Business Meeting | Tuesday, June 28, 10:30 am to 11:30 am

Do you know what happens during the year in OWEA? Do you know who represents your Section or who are committee chairs? This is the time to find out about YOUR Ohio Water Environment Association. The Annual Business Meeting gives the membership a chance to see and hear how and what the Association has been doing. Information shared includes financial reports, organizational news, committee news, ongoings of the Sections and a little from WEF. Join us after the Awards Breakfast before you engage with the exhibitors.



Exhibit Hall Tours | Tuesday, June 28, 11:00 am to 12:00 pm and 1:30 pm to 2:30 pm

Earn 1 Contact Hour per tour

Each tour will include four 15 minute sessions in the exhibit hall, educating attendees about new technology, systems, and BMPs in various aspects of water reclamation and treatment.

OWEA's exhibitors typically include representatives from collections, treatment, stormwater, instrumentation/SCADA, laboratory services, and consulting engineers. Exhibit tours are a great way to get updates on trends and innovations nationwide as exhibitors include both local and national companies. Sign up for exhibit tours the day of the Exhibits!



Young Professional Papers | Tuesday, June 28, 1:00 pm

Remember when you were just starting out in the field? To encourage our young professionals we have young professionals presenting in the Amphitheater on Tuesday afternoon. Take a break from the exhibits and earn additional contact hours. Listen to presentations regarding the design considerations of a greenway for CSO control, holistic sewer rehabilitation for the next generation of I/I control and the prioritization of improvements for Columbus' Blueprint projects.

Portage County Water Resources | Tuesday, June 28, 2:15 pm to 3:45 pm

Tour Streetsboro WWTP

The Portage County Department of Water Resources Streetsboro Wastewater Treatment Plant has a design average daily flow of 4.0 (million gallons per day) mgd and a peak hour flow of 17.4 mgd. Average daily flow to the plant is currently around 2.9 mgd, with its effluent discharging into Tinkers Creek.

The wastewater treatment process consists of the following: influent screw pumps; aerated grit removal; mechanical screening; aeration/contact stabilization; final clarification; nitrification towers; tertiary treatment; and UV disinfection. The solids treatment process consists of aerobic digestion; centrifuge dewatering; and sludge dryer to dry the solids to over 90 percent solids. What is unique about the Streetsboro WWTP solids treatment? The County hauls sludge from ten different remote WWTP's to Streetsboro for processing.

The Streetsboro WWTP has undergone numerous improvement projects since it was first built. The two most recent projects were in 2009 and 2013. The 2009 project improved their sludge processing by adding a centrifuge for dewatering and sludge dryer. The sludge dryer has design capacity of 16 dry tons per day. The system includes a wet cake silo for feeding the dryer, a dry biosolids storage silo for the dried material, and a bio-filtration system for odor control. The 2013 improvement added UV disinfection.

Join the Portage County Water Resources staff for a tour of the plant. No additional charge for the tour. Please sign up when you register.



Exhibitor Reception | Tuesday, June 28, 4:00 pm to 5:00 pm

Join your fellow professionals and exhibitors at the end of Tuesday for a time of networking. Enjoy some refreshments while we wrap up the first day of the conference in the exhibit hall. The Ops Challenge winners will be announced after an exciting two days of competition. Make sure you make contact with the exhibitors that you wish to get more information from on technologies, equipment and services. This provides a relaxed atmosphere to talk to one another and get any questions answered that you may have. You may even help another peer by sharing your experiences.

Tuesday, June 28 - **Afternoon** Technical Sessions



YOUNG PROFESSIONALS



1:00-1:45	Holistic Sewer Rehabilitation for the Next Generation I/I Control	<i>Muralikrishna Chelupati, PE ARCADIS</i>
2:00-2:45	Blueprint of Columbus Prioritization through Stakeholder Involvement and GIS	<i>Megan Miranda, PE ARCADIS</i>
3:00-3:45	Design Considerations of the Lick Run Greenway for CSO Control	<i>Jenn Delebreau Strand Associates</i>

Technical Program as of 2/23/16. Visit www.ohiowea.org for up-to-date Technical Program.

Wednesday, June 29 - Morning Technical Sessions

LABORATORY

8:00-8:45	The Lab Analyst and Process Monitoring - How to Increase Treatment Efficiency Without Even Trying	<i>Robert Smith Xylem - YSI</i>
9:00-9:45	Updates to the New Method Detection Limit in 40CFR Part 136	<i>Carol Turner NEORS</i>
10:00-10:45	Implementation of a Field Sampling Audit Procedure	<i>Erin Hammer Alloway</i>
11:00-11:45	Total and Dissolved Phosphorous Monitoring Study	<i>Melodi Clark City of Columbus</i>

POTPOURRI

8:00-8:45	Protecting Operators from Falls: A Case Study	<i>Tracy Riepenhoff, PE, LJB Corey Timko, City of North Ridgeville</i>
9:00-9:45	Cost Effective Reduction of the Hg in NEORS's Incineration Exhaust Gases	<i>Scott Reed, PE, Black and Veatch Robin Rupe, PE, NEORS</i>
10:00-10:45	Akron's Main Outfall Sewer Alternate Design and Construction	<i>Louis Burnoski, PE, AECOM Travis Capper, PE, City of Akron</i>
11:00-11:45	The Miamisburg WRF Challenge: Innovative Planning and Design for Compliance and Wet Weather Improvements	<i>Steven Reese, PE, Hazen and Sawyer David Reinker, City of Miamisburg</i>

NUTRIENTS

8:00-8:45	Is Your "New" Treatment Technology Really Disruptive?	<i>Art Umble, PE MWH Global</i>
9:00-9:45	Application of a Hydrolysed Biosolid Product as a Carbon Source in Biological Nutrient Removal	<i>Jeanette Brown Manhattan College, Riverdale NY</i>
10:00-10:45	Nutrient Reduction Through Use of Advanced Biological Nutrient Recovery	<i>Rick Johnson Clearas Water Recovery</i>
11:00-11:45	A Roadmap for Smarter Nutrient Management in a Carbon and Energy Constrained World	<i>Dr. Samuel Jeyanayagam CH2M</i>

CSO / COLLECTIONS

8:00-8:45	SSO 700 IWAP: Development of a Water Quality Sampling Program	<i>Kathleen Bollmer, PE CH2M</i>
9:00-9:45	Chevrolet Boulevard Basin: A Local/Regional Stormwater Project	<i>Jay Mosley, PE AECOM</i>
10:00-10:45	Bringing Together Treatment, Storage and Conveyance for System-Wide, Continuous Real Time Optimization	<i>Timothy Ruggaber, PE EmNet</i>
11:00-11:45	Lancaster Phase II LTCP Success : Part 1 Developing the Plan	<i>Laura McGinnis, PE and Denise Crews ARCADIS and City of Lancaster</i>

Wednesday, June 29 - **Afternoon** Technical Sessions

WET WEATHER

1:00-1:45	Green vs. Gray: Applying Sound Planning Principles to Optimize CSO Control Efforts	<i>David White, PE Wade Trim</i>
2:00-2:45	Does Green Infrastructure Meet Expectations at an Urban Zoo	<i>Nancy Ellwood, CDM Smith Mark Fisher, Cincinnati Zoo and Botanical Garden</i>
3:00-3:45	A CMOM Program? It Doesn't Need to be Scary: A Guide to Implementation and Documentation	<i>Steve Donovan Brown and Caldwell</i>
4:00-4:45	Using a Simple Scorecard Evaluation to Improve Your Stormwater Program	<i>Mark Van Auken, PE ARCADIS</i>

POTPOURRI

1:00-1:45	Recruiting the Next Generation of Operators and Engineers	<i>Carolyn Watkins Ohio EPA</i>
2:00-2:45	"We Don't Need No.....Incineration" Columbus Transitions to 100% Beneficial Re-Use of Biosolids	<i>Sierra McCreary, PE, Black and Veatch Brandon Fox, City of Columbus</i>
3:00-3:45	Impacts of PPCP's on Our Waterways: A Brief Review	<i>Bill Zawiski Ohio EPA</i>
4:00-4:45	Five Years Since Ohio Construction Reform was Approved	<i>Dennis Tinkler, PE Kokosing Industrial</i>

NUTRIENTS

1:00-1:45	Can Small Plants Meet Revised Ammonia and Nitrogen Criteria	<i>Tyler Linton and Craig Varos Great Lakes Environmental Center</i>
2:00-2:45	When Cost Matters	<i>Robert Hrusovsky, PE MWH</i>
3:00-3:45	Lake County Madison WWTP: Building on the Past and Looking to the Future	<i>Robert Schreiner, PE, Burgess & Niple Dennis Meek, DM Engineering</i>
4:00-4:45	Optimization of Enhanced Biological Phosphorus Removal Process to Achieve Low Phosphorus Limits	<i>Sara Arabi, PE Environmental Operating Solutions</i>

CSO / COLLECTIONS

1:00-1:45	Lancaster Phase II LTCP Success: Part 2 Financing the Plan	<i>Brian Bass, PE, ARCADIS Denise Crews, City of Lancaster</i>
2:00-2:45	CSO Mitigation; The Results Are in for the City of Bowling Green, Ohio	<i>Gibson Chen, PE, Avetin Engineering Douglas Clark, City of Bowling Green</i>
3:00-3:45	Taking an Emerging Enhanced High-Rate Treatment Technology from Concept to 100-mgd Reality	<i>Bob O'Bryan, PE Black & Veatch</i>
4:00-4:45	The City of Defiance's Integrated Long Term Control Plan: Targeted Inflow Reduction for CSO Control	<i>Tiffany Maag, PE, AECOM Mark Lehnert, City of Defiance</i>

Thursday, June 30 - Morning Technical Sessions

ALL STAR PERFORMERS

8:00-8:45	Can Small Plants Meet Revised Ammonia and Nitrogen Criteria	<i>Tyler Linton and Craig Varos Great Lakes Environmental Center</i>
9:00-9:45	Five Years Since Ohio Construction Reform was Approved	<i>Dennis Tinkler, PE Kokosing Industrial</i>
10:00-10:45	Does Green Infrastructure Meet Expectations at an Urban Zoo	<i>Nancy Ellwood, CDM Smith Mark Fisher, Cincinnati Zoo and Botanical Garden</i>
11:00-11:45	Protecting Operators From Falls: A Case Study	<i>Tracy Riepenhoff, PE, LJB Corey Timko, City of North Ridgeville</i>

ASSET MANAGEMENT

8:00-8:45	Performance Contracting	<i>Tim Murphy Schneider Electric</i>
9:00-9:45	Asset Management for Wastewater Utilities	<i>Richard Miller, PE and Allen Aspacher, PE FTCH</i>
10:00-10:45	Equipping Operators with Meaningful Financial Data	<i>Scott Maring, MCDGC Christy Cooper, Hilltop Consulting</i>
11:00-11:45	What's in Your Maintenance Management Wallet?	<i>Simon Watson Brown and Caldwell</i>

REGULATORY UPDATE

8:00-8:45	Ohio EPA DEFA Program Updates & Case Histories	<i>Jerry Rouch Ohio Epa</i>
9:00-9:45	Upcoming Nutrient Rules: What You Should Expect	<i>Guy Jamesson, PE, City of Columbus</i>
10:00-10:45	Ohio EPA DSW Program Updates	<i>Tiffani Kavalec Division Chief of DSW, Ohio EPA</i>
11:00-11:45	Ohio EPA Agency Update	<i>Craig Butler Director, Ohio EPA</i>

Reception & Annual Banquet | Wednesday, June 29, 7:00 pm to 9:30 pm

After a long day of technical sessions, unwind at the reception before the Annual Banquet. Watch and listen to the induction of this year's 5S class. Following that ceremony, join your fellow attendees at the annual banquet. Sit with those you already know, met during the conference or make new friends!

After a wonderful dinner, the WEF Awards will be presented to our prestigious award winners by WEF President, Paul Bowen. OWEA President, Elizabeth Wick, will have outgoing remarks before she hands over the gavel to incoming OWEA President, Ted Baker. Ted will enlighten us on what he has in store for OWEA in the next year. The conference couldn't be successful without our sponsors. All of our sponsors will be recognized for the support they give OWEA throughout the year.



Elizabeth Wick
OWEA President



Ted Baker
OWEA President-Elect



Paul Bowen
WEF BOT Representative/
WEF President



2016 Golf Outing | Monday, June 27, 9:30 am Shotgun Start

Where: **Boulder Creek**
9700 Page Rd.
Streetsboro, OH 44241

Times:
8:00 am Registration
8:00 am Driving Range Open
9:30 am Shotgun Start

Spend the day with friends and colleagues playing a round of golf at the beautiful Boulder Creek Golf Club and Event Center. One of the premier golf courses in Northeast Ohio, Boulder Creek was voted the number 2 public golf course in 2011 in Golf Week. This 18-hole course contains over 100 feet in elevational change across the 200 acre course. Boulder Creek also has a pro-shop, driving range and full scale practice facility available to our members. Finish your day on the course with refreshments and dinner at the course event center. This event is limited to 144 people, so register early!

The \$360 per foursome includes: 18-holes of golf, cart, driving range & practice facility, light breakfast, lunch, dinner, beverages and prizes.

Golf Hole Sponsor Signs available for \$250 per hole.



Meet and Greet | Tuesday, June 28, 6:00 pm to 10:00 pm

Please come and join us for a fun and relaxing evening at ThornCreek Winery in Aurora. Established in 2007, the winery consists of 8 acres of beautifully landscaped grounds with numerous garden and terrace areas for socializing and networking. A catered meal with both heavy and light appetizers will be served at various food stations throughout the winery. Try one of the ten different wines created by ThornCreek. The tented waterfall garden will have live music performed by **The Lovetown Mavericks**. Additional Beverages will be provided.



We look forward to seeing you for a fun evening at ThornCreek!

The Lovetown Mavericks are a Ohio-based rock band. They play popular songs from the 60's to the present as well as their own original material.

If they look and sound familiar, they are! Band members, Jason, Danny, Chris, and Bonzie entertained the crowd at the 2014 One Water Conference. I guess they couldn't stay away as they will be traveling from Columbus to hang out once again.



2016 Operations Challenge Invitational | Monday, June 27 and Tuesday, June 28

The Ohio Water Environment Association is proud to announce they will host an Operations Challenge Competition and National Invitational as part of the 2016 Technical Conference and Exhibition.

12
Teams

6 spots held for
invitational
teams

\$50 Team Registration (up to 5 people) includes:

Monday Morning - Continental Breakfast
Monday Lunch
Monday Night - Welcome Social at Bertram Hotel
Tuesday's Awards Breakfast
Tuesday's Meet & Greet at ThornCreek Winery

Registration
and details at
ohiowea.org

★ ★ ★ **PROCESS CONTROL EVENT** ★ ★ ★

This event consists of a written test meant to evaluate an operator's knowledge of WWTP process control. The test consists of three main sections: short math, multiple choice, and process control scenarios. The point values for the questions in each section vary. The teams have to decide on how to divide up the sections among the four team members and chose which questions to answer. The test is designed to have enough questions that the teams will not complete the entire test within the 20 minute event. Teams will often consult the WEF MOP 11 manual and Ohio EPA "need to know criteria" for the operator certification exams, while preparing for this event.

New this year: Teams will also be using the Hydromantis simulation software as part of the event!

★ ★ ★ **LABORATORY EVENT** ★ ★ ★

Most operators have been there ... it's Saturday and the lab people aren't there, but somebody has to read the BODs. This event is designed to simulate operators preparing and reading a set of BODs. Working as a team, the competitors will verify the sample to be tested is within parameters, prepare a set of 10 BOD dilution bottles, and then fill the bottles with differing amounts of dilution water, seed material, and sample. The dissolved oxygen content of each is bottle is determined after filling. A laboratory bench sheet must be completed accurately documenting the BOD dilutions. Teams are evaluated on completing the event in accordance with acceptable lab practices and in the least amount of time possible.

★ ★ ★ **SAFETY EVENT** ★ ★ ★

Words that no one wants to hear ... a co-worker has become incapacitated while in a confined space. You need to get them out, and fast. But first things first ... you must complete a confined space permit, test the atmosphere to be sure it's safe for a rescue, and get your safety equipment ready. Assemble the gantry recovery crane, insert the fresh air blower, then pop the manhole cover and lower the rescuer. Place a harness on the unconscious co-worker and lift him out. Then retrieve the rescuer. The key is to be fast, but also be safe. Teams are judged on time to complete the event and on penalties assessed for safety violations. Remember it does not do any good to try to rescue someone and injure yourself in the process. **New this year:** We will be using the Xtirpa davit system and there will be a simulated valve repair for the entrant/s.

★ ★ ★ **COLLECTIONS SYSTEMS EVENT** ★ ★ ★

How long do you think it would take you to cut through an 8" SDR-35 pipe with a hand saw? No battery powered Sawzall® here. 30 seconds ... how about 45 seconds? Unless you can be around 20, don't even try. The object of the Collections Event is to cut out a 1' - 2' section of broken sewer line from a six foot long pipe, replace it with another unbroken section using two Ferncos®, and install a new saddle connection on the fresh pipe. You have four team members: who cuts what, and when? Choreographed chaos is the best way to describe the event. Complete the whole thing in less than two minutes and you might just be fast enough to be the winners.

★ ★ ★ **MAINTENANCE EVENT** ★ ★ ★

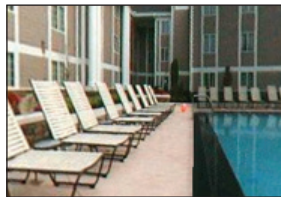
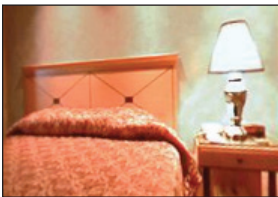
Weather in Ohio is always changing, wait an hour it will go from winter to summer. Imagine a summer thunderstorm. A lightning strike has knocked out the power and fried the control panel at a remote lift station. It is time to mobilize your trailer mounted engine and pump set. Before you can take the trailer out, you have to be sure it will work. Your team must perform maintenance on the trailer, engine, and pump. Check the tires, change the filters, vacuum test the pump - just a sample of the tasks to be completed. Wheel the trailer over to the model wet well, then attach the suction and discharge hoses, program the engine and pump control unit, and away it goes. Remember move quickly ... the Mayor's house is the first lateral up from the lift station!

Bertram Inn and Conference Center

Join OWEA members and colleagues for a stay at the Bertram Inn and Conference Center in Aurora, Ohio for the OWEA 2016 Technical Conference and Expo. The Bertram Inn and Conference Center is conveniently located less than an hour from Cleveland, Akron, Canton and Youngstown. The approximately 180,000 square feet of meeting space is complimented by two business centers, heated outdoor pool, game room, two fitness centers and two restaurants on site.

- ◆ Standard room rate is \$119 per night for up to four persons.
- ◆ The guest rooms include standard amenities such as flat screen television, desk & chair, coffee maker, iron & ironing board, hair dryer and more.
- ◆ Complimentary Wi-Fi and high speed Internet is also included in the rooms, public areas, and meeting rooms.
- ◆ Free parking

OWEA room rates available Sunday June 26 - Thursday June 30, 2016.
Make your reservations via the link at www.ohiowea.org or call The Bertram: (330) 995-0200
Please ask for Ohio Water Environment Association 2016 Conference
Cutoff date for special rate is Tuesday, May 31, 2016



2016 Spouse/Guest Program | Tuesday, June 28 and Wednesday, June 29

Calling all spouses and guests - be ready for a BOOMing time in Northeast Ohio!

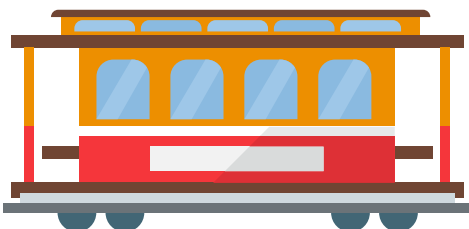
Tuesday

Ever wanted to try your hand at creating fancy cakes but never had the opportunity? Following the Awards Breakfast, spouses will gather for a trip to The White Flower Cake Shoppe. Yes, this is the shop whose staff was on Food Network's Cake Challenge! As part of the demonstration, you will get to try your hand at decorating cupcakes. Following this sweet treat, you will travel to the rustic Burntwood Tavern in neighboring Solon for a late lunch, returning in plenty of time to attend the Meet and Greet.

Wednesday

Following breakfast at the hotel, the adventure begins with a trip on Lolly the Trolley to the nationally known Lakeview Cemetery in Cleveland. The guided tour will provide spouses and guests the opportunity to see the historic Wade Memorial Chapel, along with the Garfield and Rockefeller Monuments. Explore the final resting place of a president of the United States, John D. Rockefeller, Eliot Ness, Carl B. Stokes, and many other locally famous people. You will be taken back in time following this fabulous tour by lunch and shopping in Cleveland's Little Italy. The renaissance is alive and well with the cafes, shops and galleries in this neighborhood brimming with strong traditions, a rich cultural heritage, and a spirit of artistry.

Program includes tickets to the Awards Breakfast, Meet & Greet, Reception & Annual Banquet, breakfast Wednesday and Thursday, and these special spouse/ guest activities. The cost is \$160 per guest if registered by May 31st or \$210 per guest June 1st or later.



Register Online at ohioewa.org

First Name (for name badge)		Last Name	
Company Name			Title
Address			
City		State	Zip
Email:		Tel #:	
OWEA/WEF # (req for member rate)		Spouse/Guest Name (if attending)	

Conference Registration	Registration Type	by May 31	June 1 and after	Row Total
Full Conference includes: All Technical Sessions, Exhibition, Awards Breakfast, Meet & Greet, Wed Lunch, Annual Banquet	Full Conference Member	\$275 <input type="checkbox"/>	\$325 <input type="checkbox"/>	
	Full Conference Nonmember	\$400 <input type="checkbox"/>	\$450 <input type="checkbox"/>	
	Full Conference Retired (not working)	\$150 <input type="checkbox"/>	\$200 <input type="checkbox"/>	
	Full Conference Student (ID Req'd)	\$50 <input type="checkbox"/>	\$75 <input type="checkbox"/>	
Tue Only includes: Exhibition, Awards Breakfast, Meet & Greet	Tuesday Only Member	\$145 <input type="checkbox"/>	\$170 <input type="checkbox"/>	
	Tuesday Only Nonmember	\$220 <input type="checkbox"/>	\$245 <input type="checkbox"/>	
Wed Only includes: Technical Sessions, Box Lunch, Annual Banquet	Wed Only Member	\$145 <input type="checkbox"/>	\$170 <input type="checkbox"/>	
	Wed Only Nonmember	\$220 <input type="checkbox"/>	\$245 <input type="checkbox"/>	
Includes: Awards Breakfast, Meet & Greet, Annual Banquet, Spouse Event	Spouse/Guest Program	\$160 <input type="checkbox"/>	\$210 <input type="checkbox"/>	
Streetsboro Plant Tour <input type="checkbox"/> \$0 Tues, June 28, 2:15 - 3:45 pm Avail to Full/Tues Registration Options	Extra Awards Breakfast Ticket(s)	___ x \$35 each		
	Extra Meet & Greet Ticket(s)	___ x \$60 each		
	Extra Annual Banquet Ticket(s)	___ x \$75 each		
OWEA Golf Outing Monday, June 22 at Boulder Creek				
Includes: Golf Cart, Range, Lunch, Beverages, Prizes and Dinner. 8:30 am Registration, 9:30 am Shotgun Start, 4 person Scramble. Proximity Prizes and Course Winners. Boulder Creek Golf Course www.bouldercreekohio.com	# Team(s) of four golfers	___ x \$360 each		
	# Individual Golfers	___ x \$90 each		
	Hole Sponsorship Sign	___ x \$250 each		
	Print names of golfers:			
TOTAL AMOUNT DUE				

For Reduced Rate Technical Session/Exhibition Registration Only Options - Visit www.ohioewa.org

Tickets will be taken for the events below. Please check which events you plan to attend.	
Included in Full and Tues Registration	Included in Full and Wed Registration
<input type="checkbox"/> Awards Breakfast	<input type="checkbox"/> Wednesday Lunch
<input type="checkbox"/> Meet & Greet	<input type="checkbox"/> Annual Banquet

FORM OF PAYMENT
<input type="checkbox"/> Check # or P. O. #
<input type="checkbox"/> Credit Card - you will be emailed a secure link to enter your credit card payment. Or you may call the OWEA office with your credit card number.
<input type="checkbox"/> I have read & agree to the OWEA refund policy
OWEA 1890 Northwest Blvd, Suite 210 Columbus, OH 43212 T: 614.488.5800 F: 614.488.5801 E: info@ohioewa.org

OWEA Refund Policy

Cancellations within 72 hours of the conference or no-shows the day of the conference will be billed in full and will not receive a refund.
Any Cancellation 72 or more hours prior to the conference will receive a 65% refund minus any credit card processing fees.
Any Cancellation 7 days or more prior to the conference will receive a full refund minus any credit card processing fees.

Exhibitor Registration

JUNE 27-30
THE BERTRAM INN AND
CONFERENCE CENTER

Register Online at ohioewa.org

Company Name		
Address		
City	State	Zip
Primary Exhibitor Responsible for Exhibit:		
Email:	Tel #:	
OWEA/WEF # (req for member rate)	Fax #:	
Signature _____		Date: _____
(by signing you agree to the Exhibitor Terms & Conditions posted at www.ohioewa.org)		

Exhibitor Registration	Registration Type	Cost	Row Total
Includes One Full Conference Registration: All Technical Sessions, Exhibition, Awards Breakfast, Meet & Greet, Wed Lunch, Annual Banquet for primary exhibitor.	Exhibit Booth Member	\$700 <input type="checkbox"/>	
	Exhibit Booth Nonmember	\$875 <input type="checkbox"/>	
Add a Professional Membership:	OWEA/WEF Membership	\$160 <input type="checkbox"/>	
Additional Booth Attendant includes: Exhibit Exposition access and Tuesday Breakfast in Exhibit Area	Booth Attendant (max 4)	____ x \$50 each	
	Print Names:		
Includes: Awards Breakfast, Meet & Greet, Annual Banquet, Spouse Program	Spouse/Guest Program	\$160 <input type="checkbox"/>	\$210 <input type="checkbox"/>
		Early Bird Rate	After May 31
Note Special Requests (subject to avail)			
Exhibitor Tour: If you would be interested in giving a 15 minute booth presentation, check here: <input type="checkbox"/>			
	Extra Awards Breakfast Ticket(s)	____ x \$35 each	
	Extra Meet & Greet Ticket(s)	____ x \$60 each	
	Extra Annual Banquet Ticket(s)	____ x \$75 each	

OWEA Golf Outing Monday, June 27 at Boulder Creek Course

Includes: Golf Cart, Range, Lunch, Beverages, Prizes, and Dinner. 8:30 am Registration, 9:30 am Shotgun Start, 4 person Scramble. Proximity Prizes and Course Winners. Boulder Creek Golf Course www.bouldercreekohio.com	# Team(s) of four golfers	____ x \$360 each	
	# Individual Golfers	____ x \$90 each	
	Hole Sponsorship Sign	____ x \$250 each	
	Print names of golfers:		
TOTAL AMOUNT DUE			

Tickets will be taken for the events below.
Please check which events you plan to attend.

Included in Full and Tues Registration	Included in Full and Wed Registration
<input type="checkbox"/> Awards Breakfast	<input type="checkbox"/> Wednesday Lunch
<input type="checkbox"/> Meet & Greet	<input type="checkbox"/> Annual Banquet

FORM OF PAYMENT

Check # or P. O. #

Credit Card - you will be emailed a secure link to enter your credit card payment. Or you may call the OWEA office with your credit card number.

I have read & agree to the OWEA refund policy

OWEA
1890 Northwest Blvd, Suite 210
Columbus, OH 43212

T: 614.488.5800 F: 614.488.5801

E: info@ohioewa.org

OWEA Exhibitor Refund Policy

Booth Cancellations received after May 31, 2016 or no-shows the day of the Exhibition will not receive a refund.